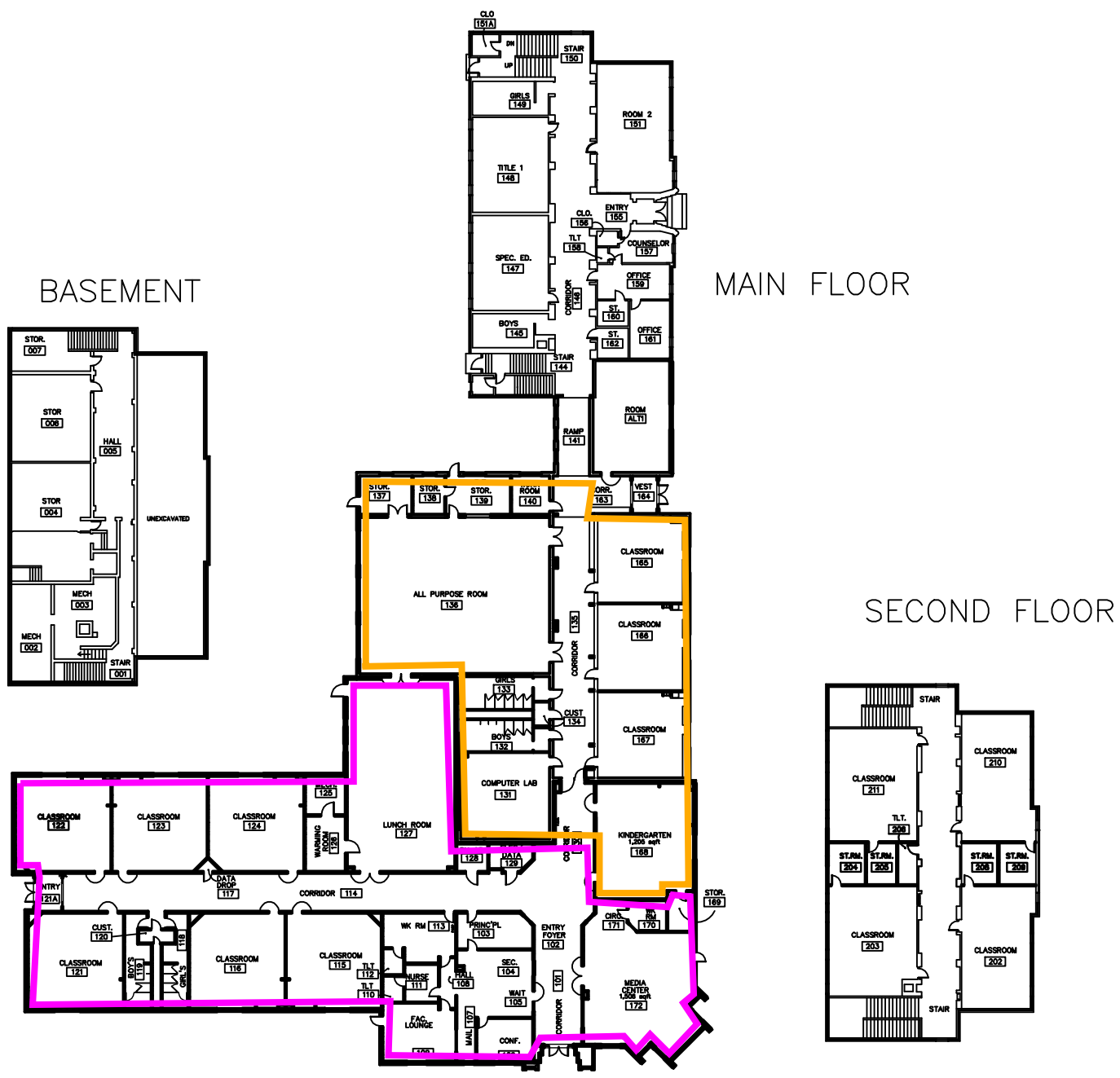


Additions

1958 - Classrooms and a Multipurpose Room

2008 - Remodel



IDAHO FALLS SCHOOL DISTRICT #91
 690 John Adams Pkwy, Idaho Falls, ID 83401
 Telephone 208/525-7500

PROJECT NO: _____
 DATE: MAY 19, 2008
 DRAWN BY: _____
 CHECKED BY: _____

PROJECT: HAWTHORNE ELEMENTARY SCHOOL
 1520 SOUTH BLVD, IDAHO FALLS, ID
 (208) 525-9334

PROJECT TITLE: FLOOR PLANS