

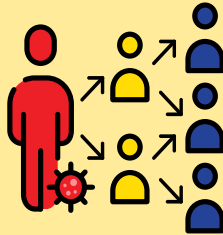
D91's Response Plan to a Positive Case of COVID-19

Updated October 13, 2020



You Will Receive A Communication From D91 When...

- When a student or staff member in your child's school has tested positive for COVID-19. The communication will include next steps and general information.*
- When a student or staff member on a bus your child rides tests positive for COVID-19.
- When a student or staff member in an extracurricular activity your child is involved in tests positive for COVID-19.
- When a single school, cluster of schools or the district changes phases (Green/Blue/Yellow/Red)
- When a single school, cluster of schools or the district has to close because of COVID-19 exposure and/or excess absenteeism by students or staff.
- When schools are closed because of extreme weather or other issues.

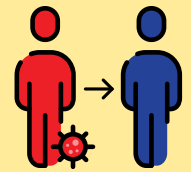


You Will Not Receive a Communication from D91 When...

- When someone tests positive for COVID-19 on a bus, in a school, or in an extracurricular activity your child is not involved in.

What If a Student or Staff Member Tests Positive for COVID-19?

- If a student or staff member tests positive for COVID-19, they will be advised to isolate for 10 days from symptom onset in accordance with guidance from Eastern Idaho Public Health (EIPH).
- D91 will work closely with EIPH to identify those who were in close contact with that student or staff member.
- Those in close contact – within 6 feet for more than 15 minutes – with a person who has tested positive for COVID-19 will be asked to isolate for 14 days and monitor their health for symptoms. Symptoms may appear 2 to 14 days after exposure and include:



- Fever or chills
- Cough
- Shortness of breath or difficulty breathing
- Fatigue
- Muscle or body aches
- Headache
- Sore throat
- New loss of taste or smell
- Nausea or vomiting
- Diarrhea
- Congestion or runny nose

- Students and staff who have had secondary contact with someone who tested positive for COVID-19 will not need to isolate. (*Secondary contact is being in contact with someone who has been in contact with someone who has tested positive.*)
- We advise everyone to monitor their health regularly for symptoms of COVID-19.
- Any students and staff who are showing symptoms or feeling sick should stay at home.

Students and staff with questions should contact their healthcare provider or Eastern Idaho Public Health at (208) 522-0310 or at www.eiph.idaho.gov

* High schools will send these notifications weekly.